



MONTHLY MEMBERSHIP PROGRESS REPORT

District 5M 2

Results as of: 06/30/2018

GMT: MICHAEL MOLEND A

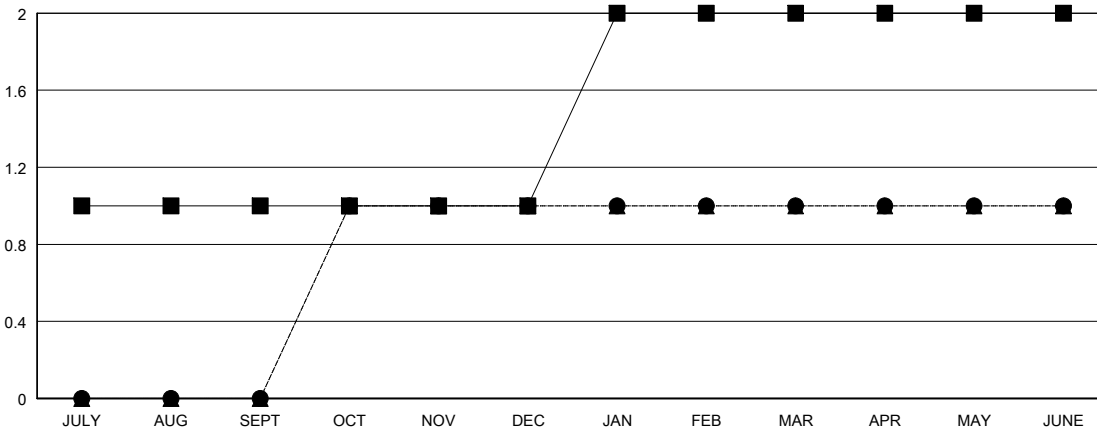
LOCATION MINNESOTA

GMT CA

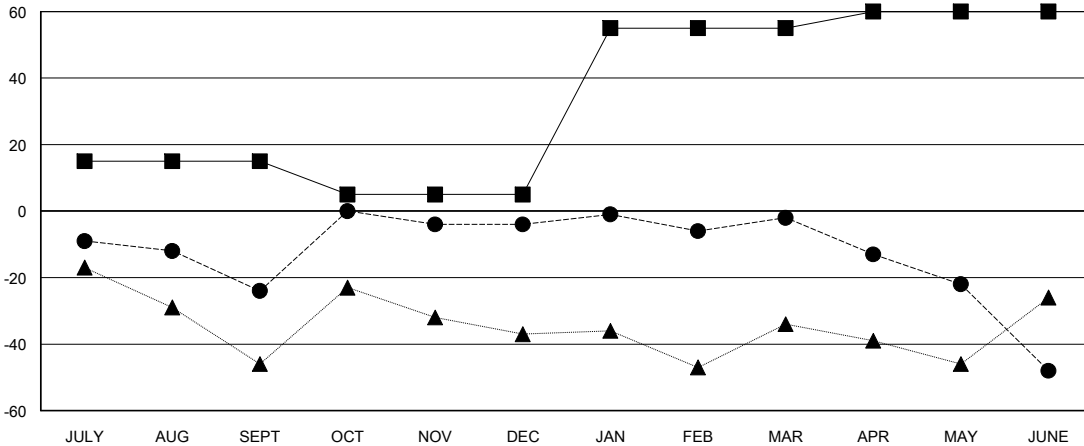
Clubs			
RESULTS FOR 2017-2018			
QUARTER	NEW CLUB GOAL	NEW CLUBS	DROPPED CLUBS
JULY/AUG/SEPT	1	0	0
OCT/NOV/DEC	0	1	0
JAN/FEB/MAR	1	0	0
APR/MAY/JUNE	0	0	0

Members			
RESULTS FOR 2017-2018			
QUARTER	MEMBER GROWTH NET GOAL	MEMBER GROWTH ACTUAL	DROPPED MEMBERS ACTUAL (including transfers)
JULY/AUG/SEPT	15	19	39
OCT/NOV/DEC	-10	68	47
JAN/FEB/MAR	50	45	39
APR/MAY/JUNE	5	55	99

GOALS AND ACTUAL NEW CLUBS CUMULATIVE



GOALS AND ACTUAL MEMBERS CUMULATIVE



DROPPED CLUBS: 0	44 CLUBS OF 65 ADDED 1 OR MORE NEW MEMBERS	<u>GENDER DISTRIBUTION</u> MALE 1,703 (70.49%) FEMALE 713 (29.51%) Women Percentage Fiscal Year Goal: 28%
<u>DROPPED MEMBERS</u> DECEASED 25 CLUB CANCELLED 0 OTHER 199 TOTAL 224	CLICK HERE FOR CUMULATIVE MEMBERSHIP DATA	TOTAL FAMILY UNIT MEMBERS 0 FAMILY MEMBERS PAYING HALF DUES 0